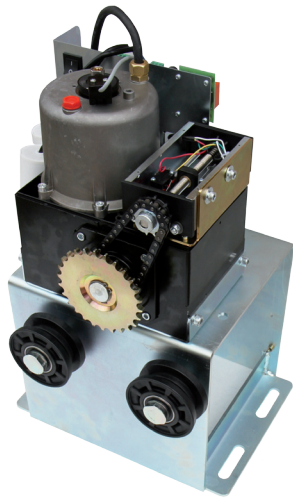




Lepus Box

CHAIN SLIDING MOTOR IN OIL BATH FOR HEAVY DUTY APPLICATIONS AND WEIGHT 1200 LBS/37 FEET



24V

STAINLESS STEEL CASE

- Opening up to 37 feet / 11mt or 1200 lbs/600kg
- All parts are manufactured and tested by SEA
- Electric **motor and reduction gear** are continuously immersed **in oil bath** allowing long last operation and intensive use
- Gears housed in a single piece cast aluminum block.
- **Mechanical clutch in oil-bath** as an anti-crush safety device.
- Electronic clutch as an extra anti-crush safety device.
- Reversing system in case of obstruction (ENCODER).
- Easy and unique manual release with key.
- **Ball bearing wheels.**
- Stainless steel case with manual release.
- Equipped with digital control board GATE 1 DG
- Buzzer alarm
- Duty cycles:* 90 %
- **Stainless steel case**
- **On request model for up to 2000 lbs (LEPUS BOX PLUS)**
- **24V version equipped with battery back up**

* Duty Cycles depend on gate size and installation



Unique manual release with lever (no crank needed)



Ball bearing wheels to grant a better performance

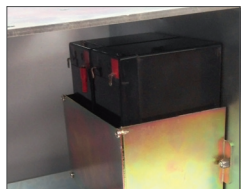


External manual release (add SECLB 12710063)

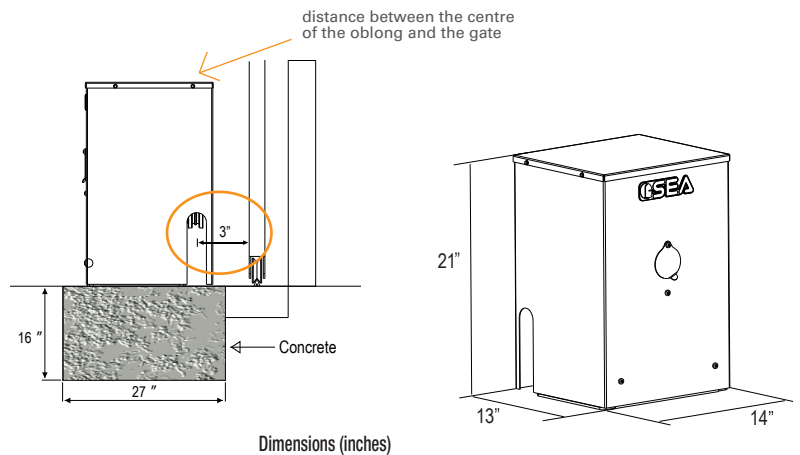
CODE	DESCRIPTION	MAX LEAF WEIGHT	MAX LEAF LENGTH	DUTY CYCLES %	PCS PER PALLETS
1110BOX-08A-CSA	LEPUS BOX 1200	1200 lbs	40 feet	90	8
1111BOX108A-CSA	LEPUS BOX PLUS 2000	2000 lbs	40 feet	70	8
1110BOX24-CSA	LEPUS BOX 24V DC	1500 lbs	40 feet	90	8

CONTROL BOARDS

CODE	DESCRIPTION
2300A110G1DGR	GATE 1 DG 110V Replace (only circuit)
2300A24U1DGR	USER 1 DG 24V Replace (only circuit)



BATTERY BACK-UP
for LEPUS BOX 24V



ACCESSORIES

16700047 G-LOCK Magnetic Lock	OIL-E OIL Yellow oil in 1 quart bottle	12710063 SECLB External release with box and cable	16101096 Pinion for chain type 50 (for LEPUS BOX PLUS)

PACKAGE LEPUS BOX

- N.1 Operator LEPUS BOX with GATE 1 control board
- N.20 Feet of chain (type 40)
- N.1 Receiver
- N.1 Remote control 433 Mhz
- N.1 Foundation plate
- N.1 Installation accessories Kit
- N.1 Installation instructions and general notice
- N.1 Warning signboard